

m a r e a

by

SH

*marea*

RESIDENCES

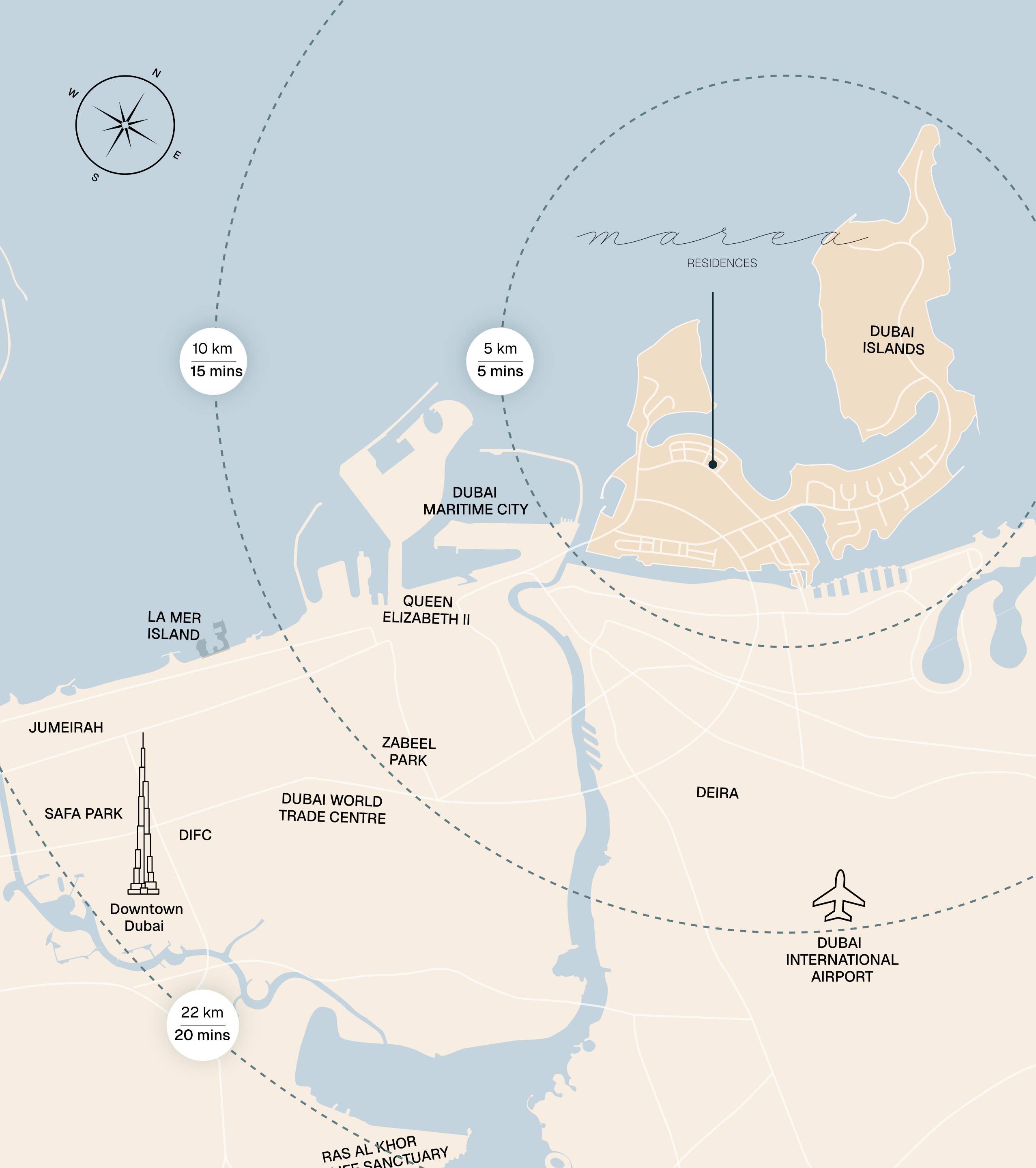
The Perfect Fusion of Living and Leisure

A fresh approach to living has taken shape from the designers of opulent hotels. The residential structure of Marea Residences embodies the hospitality legacy of Sharafi Development, offering residents upscale finishes, unique island lifestyle, and hotel-style amenities.



*More than simply a home, Marea
feels like a haven by the sea*





The Latest Jewel of the City

Marea is flawlessly positioned to bring together the comfort of the city with the finest of island living. As part of the city's 2040 vision, this destination, which is tucked away within the Dubai Islands masterplan, is poised to grow into one of Dubai's most recognizable waterfront communities.



2 minutes

to Dubai Islands
Beach



2 minutes

to Dubai Islands
Mall



20 minutes

to Dubai
International Airport



20 minutes

to Downtown Dubai
& Burj Khalifa

An In-depth Look at Dubai Islands:

This destination features over 20 km of immaculate beaches and waterfront promenades, 20 km of verdant green areas and nature corridors, and two top-notch golf courses, all set within a visionary concept of five connected islands.

- Museums, performance spaces, art districts, upscale resorts, and boutique hotels
- Soon-to-open Dubai Islands Mall adds retail convenience
- Easy bridge connections to mainland Deira
- Quick access to Sheikh Zayed Road



SH

SHARAFI

DEVELOPMENT

Core principles:

Sharafi Development carries a legacy that's been shaping Dubai for over a century. What started in 1924 as a family venture in trading has grown into one of the city's most respected names in real estate and construction. From their first landmark on the Creek waterfront in the 1970s to the contemporary projects redefining Dubai's skyline today, Sharafi has stayed true to its founding values of integrity, quality, and trust.

- Architectural precision
- Long-term value creation
- Exclusivity & rarity
- Timeless craftsmanship

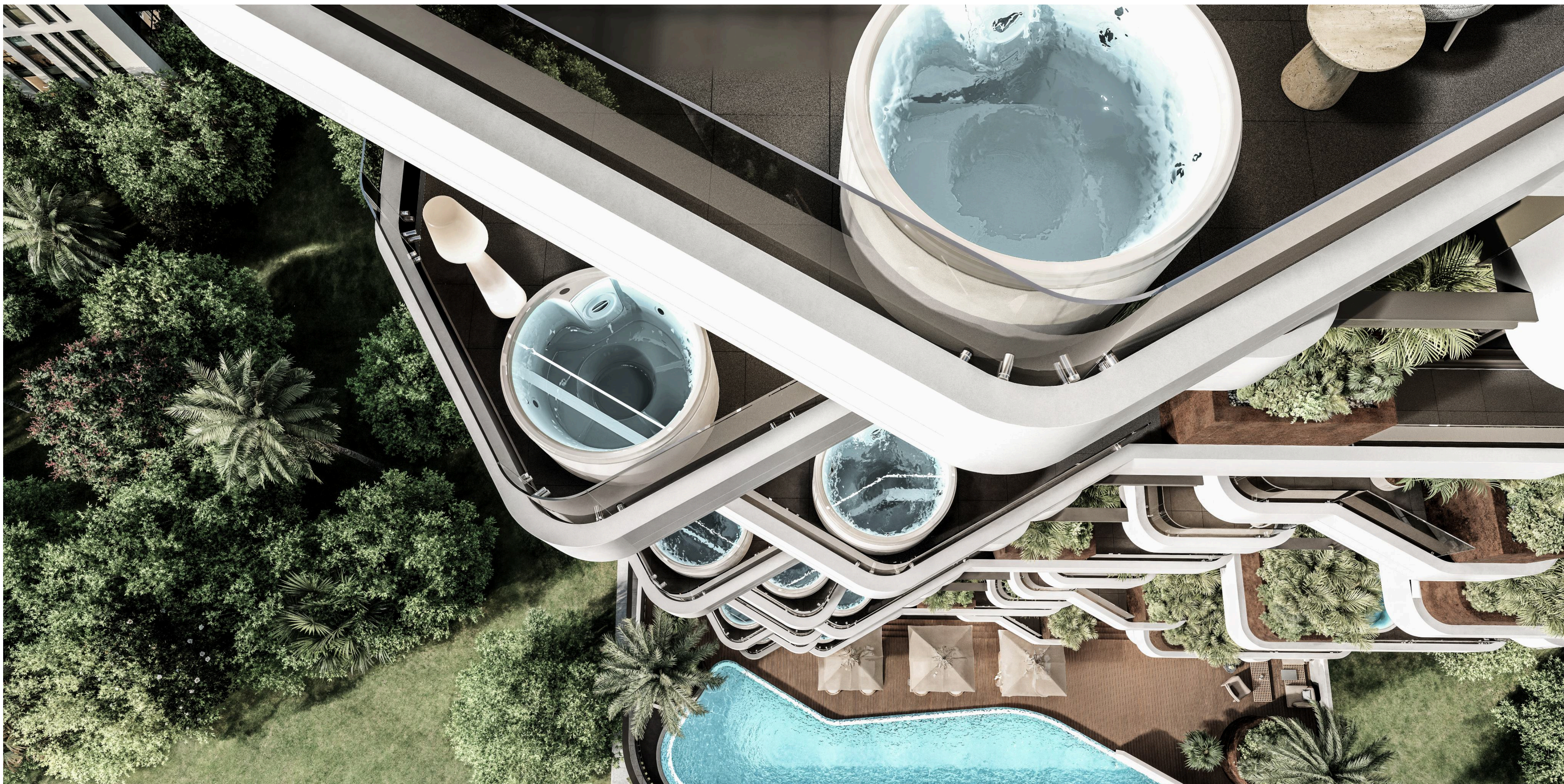
About

Dubai Islands' Marea Residences is an upscale G+2+12 complex. Marea, with its rare dwellings, sculpted façades, and sea-inspired flowing form, is an emblem of tranquility and opulence.

marea
RESIDENCES



SH



Interior

The Craftmanship

Sharafi's devotion to accuracy ensures that every residence reflects European artistry and exemplary material selection:

- Bespoke layouts with abundant natural light
- Open-plan kitchens with premium appliances
- Spa-inspired bathrooms
- High ceilings for a sense of space
- Private balconies & terraces with a Jacuzzi







Entrance



















Exterior

A sculpted architectural masterpiece forged by the waves, Marea presents the following characteristics:

- Sea-reflection flowing edges
- Superior workmanship paired with seclusion
- Tiers of verdant podiums
- Swimming deck with sun lounger







Luxury Amenities

Marea offers a resort-inspired approach to life, harmonizing wellness, repose, and conviviality

 Infinity Pool

 Private Gardens

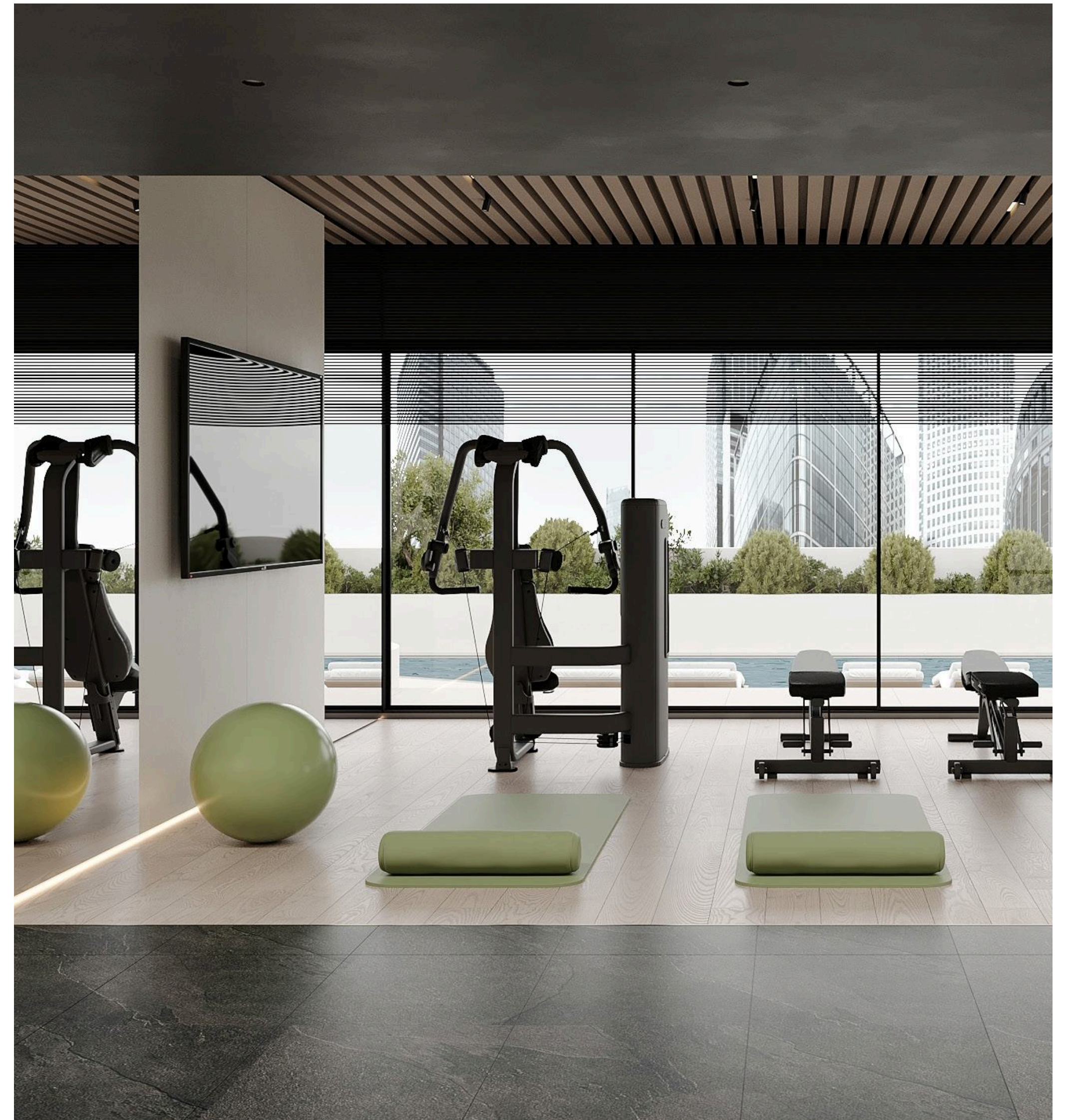
 Concierge & 24/7 security

 Spa & Wellness studio









Shower





Inventory & Specs

Unit Mix:

1 Bedroom Residences

2 Bedroom Residences

Penthouse Collection
(2 -3 BR with a Rooftop Terrace
& Private Pool)

Floors:

G + 2 Podium + 12 Residential Levels

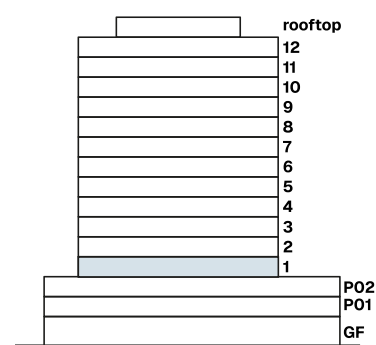
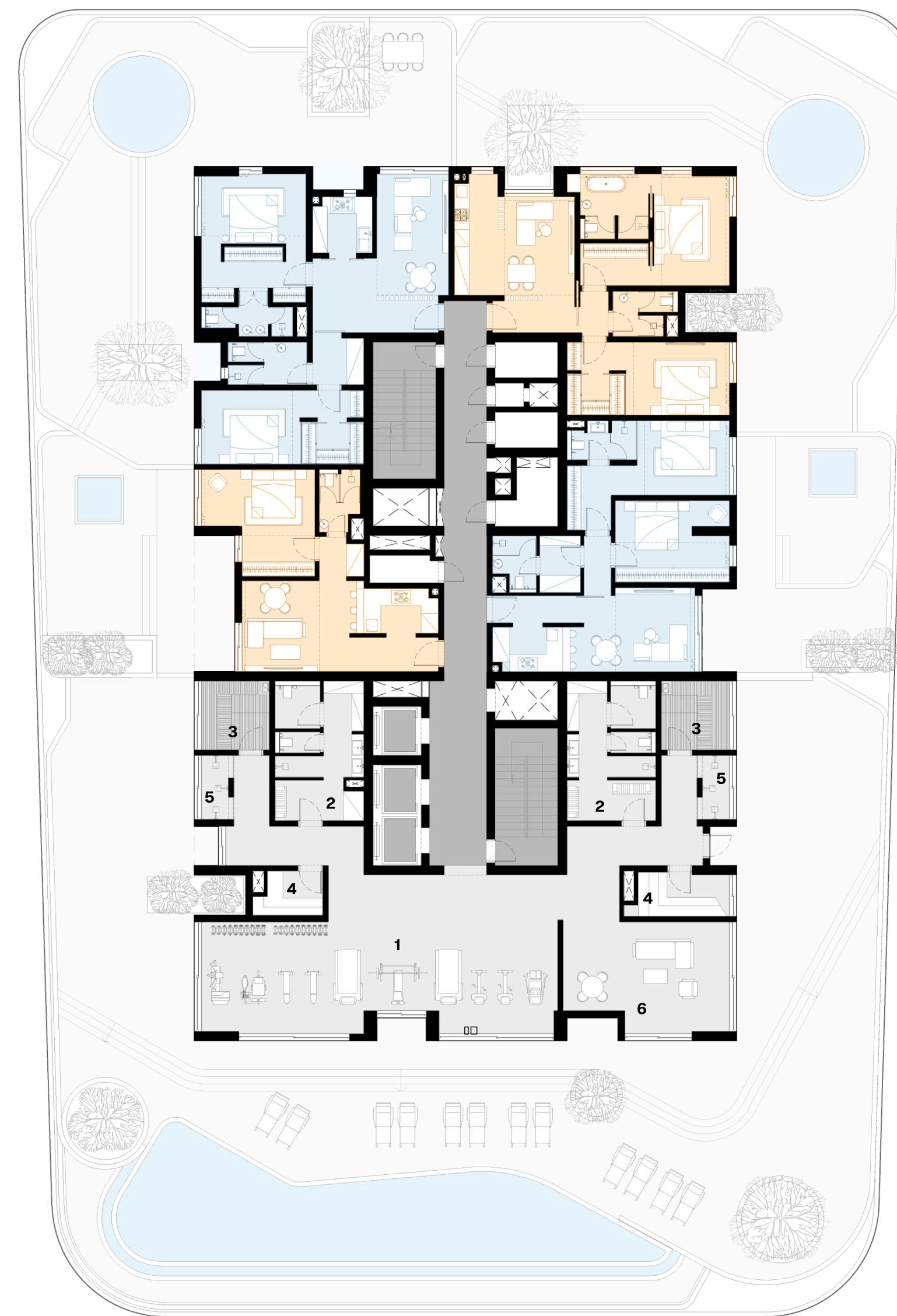


Floor Plan

1st Floor

Amenities:


- 1** - Gym
- 2** - Changing Room
- 3** - Spa
- 4** - Sauna
- 5** - Sensory Shower
- 6** - Lounge Room

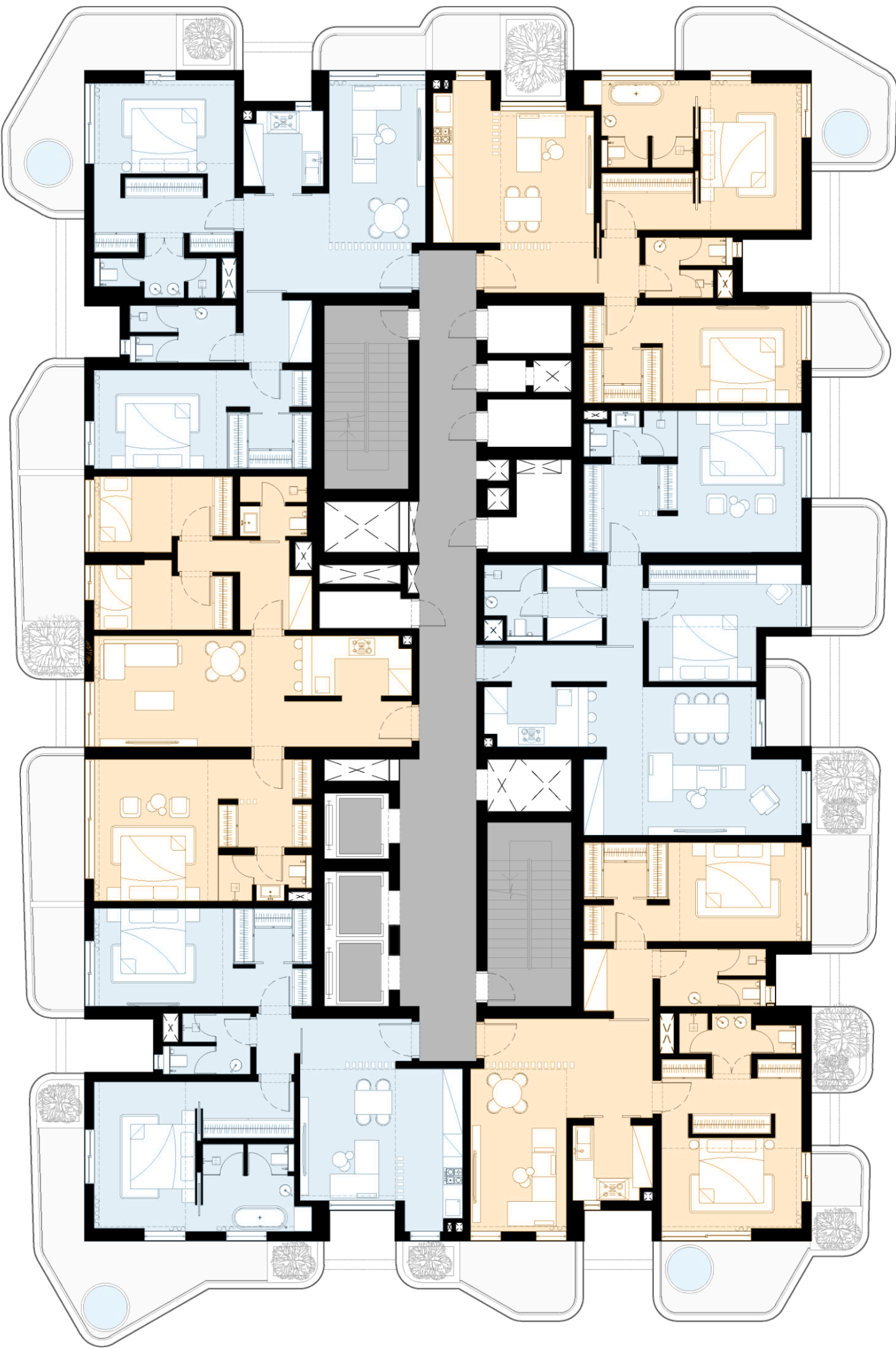
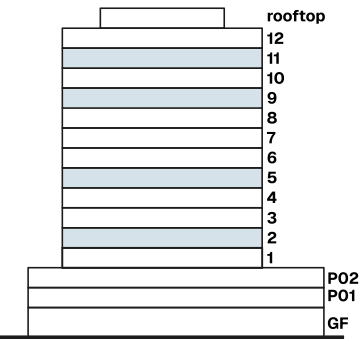


Floor Plan

Floor Sample

Floor Details:


 6 two-bedroom units featuring a variety of layouts




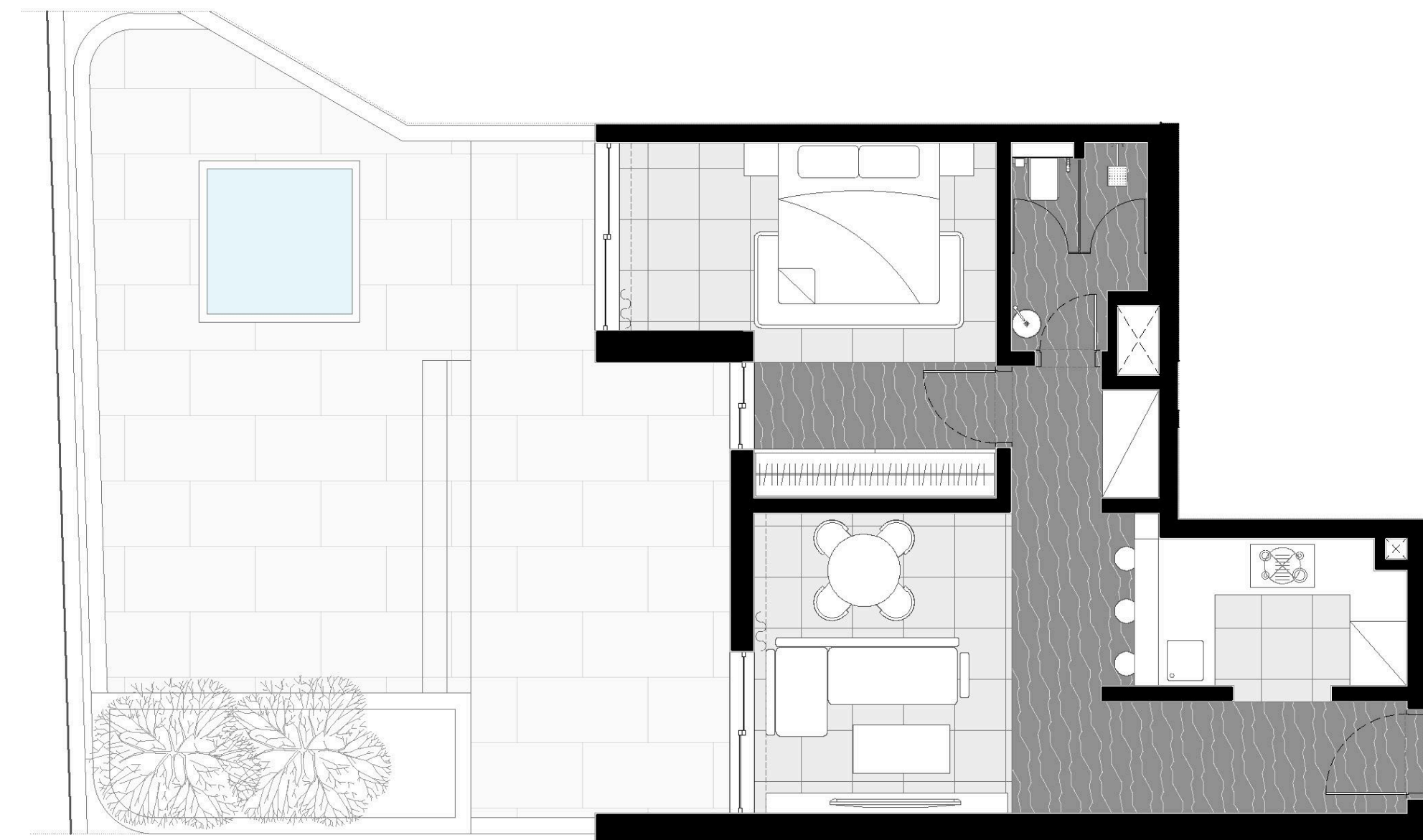
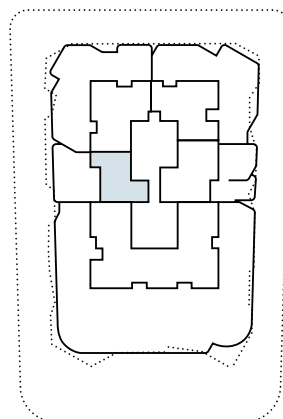
1 Bedroom

Unit Sample

Unit Details:

 1-Bedroom


 Jacuzzi




2 Bedroom

Type A

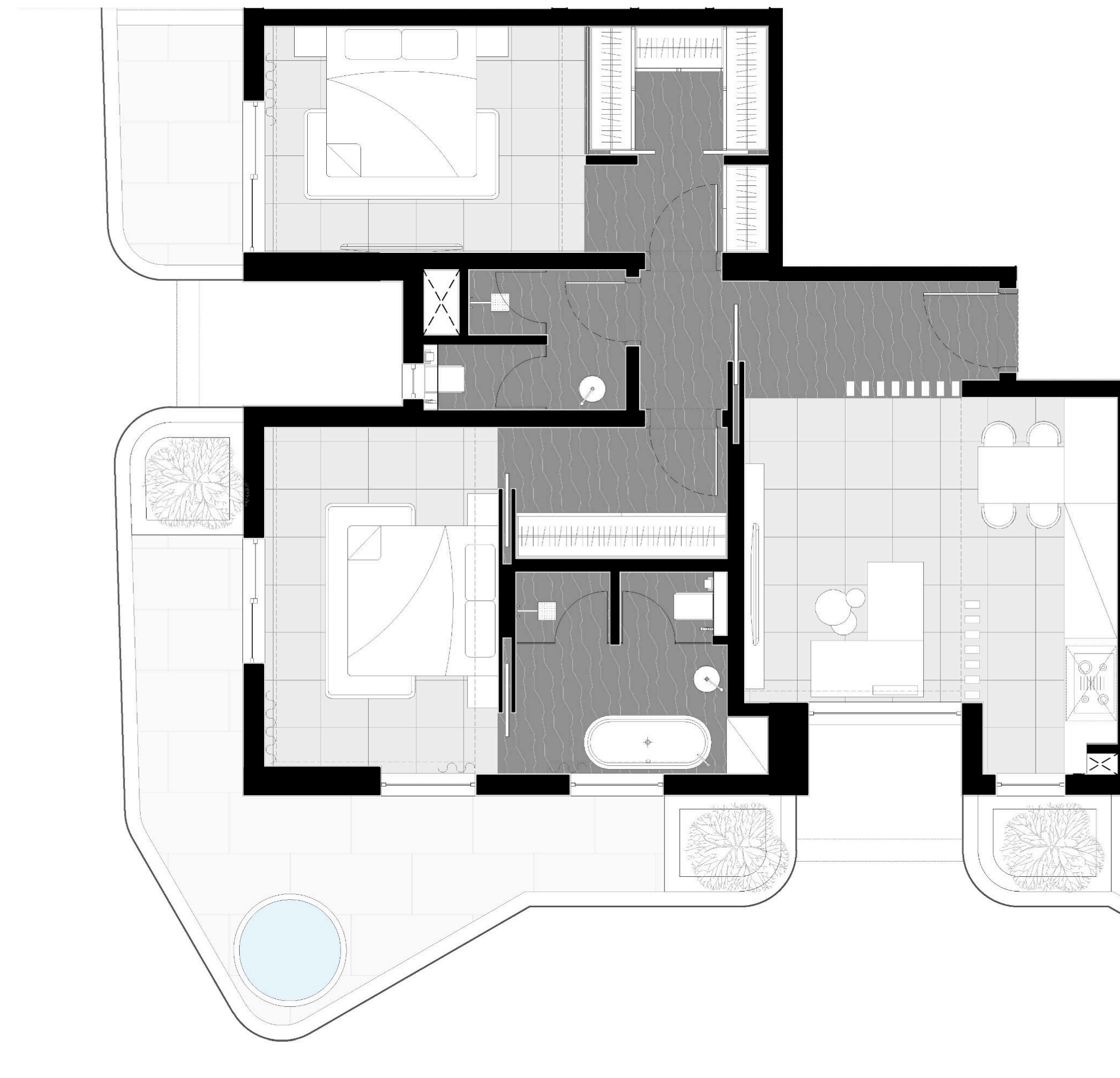
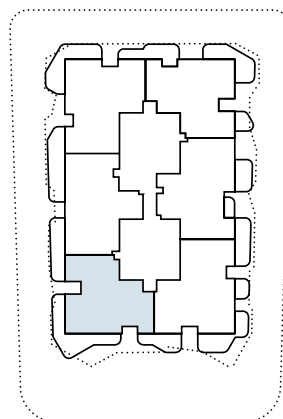
Unit Details:

 2-Bedroom

 Jacuzzi

 Bathtub


 Walk-in closet



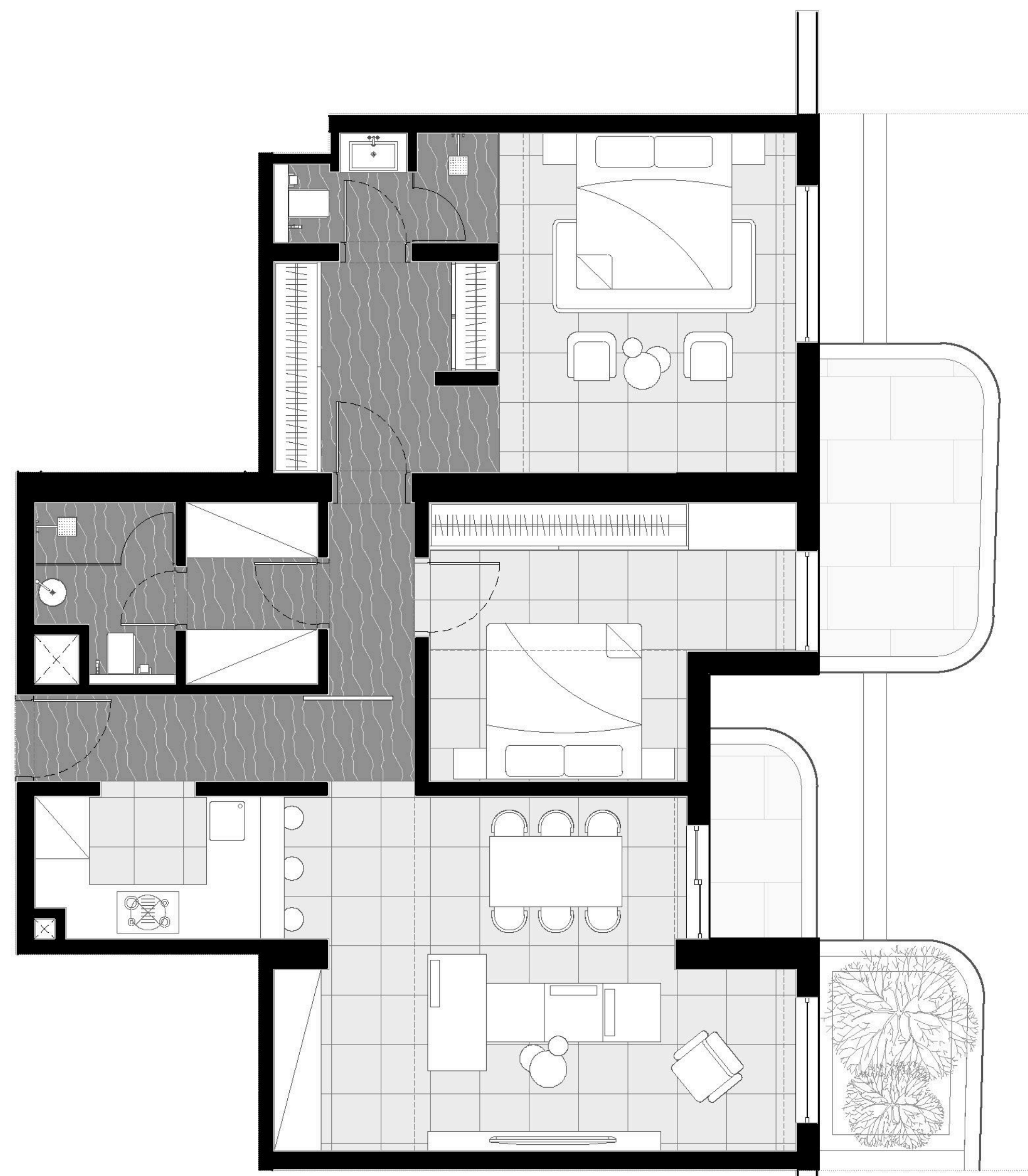
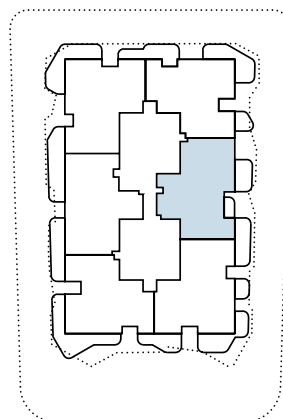
2 Bedroom

Type E

Unit Details:

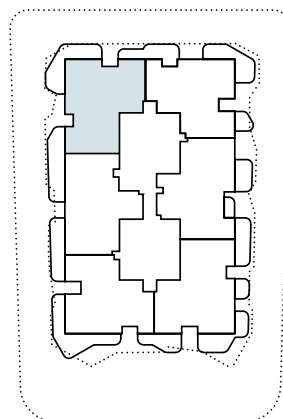
 2-Bedroom

 Walk-in closet





2 Bedroom

Type D



Unit Details:

 2-Bedroom

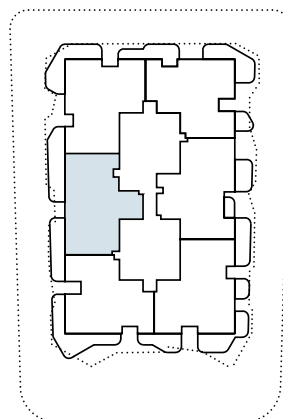
 Jacuzzi

 Walk-in closet






2 Bedroom

Type F



Unit Details:


-  2-Bedroom
-  Dividable Room
-  Walk-in closet

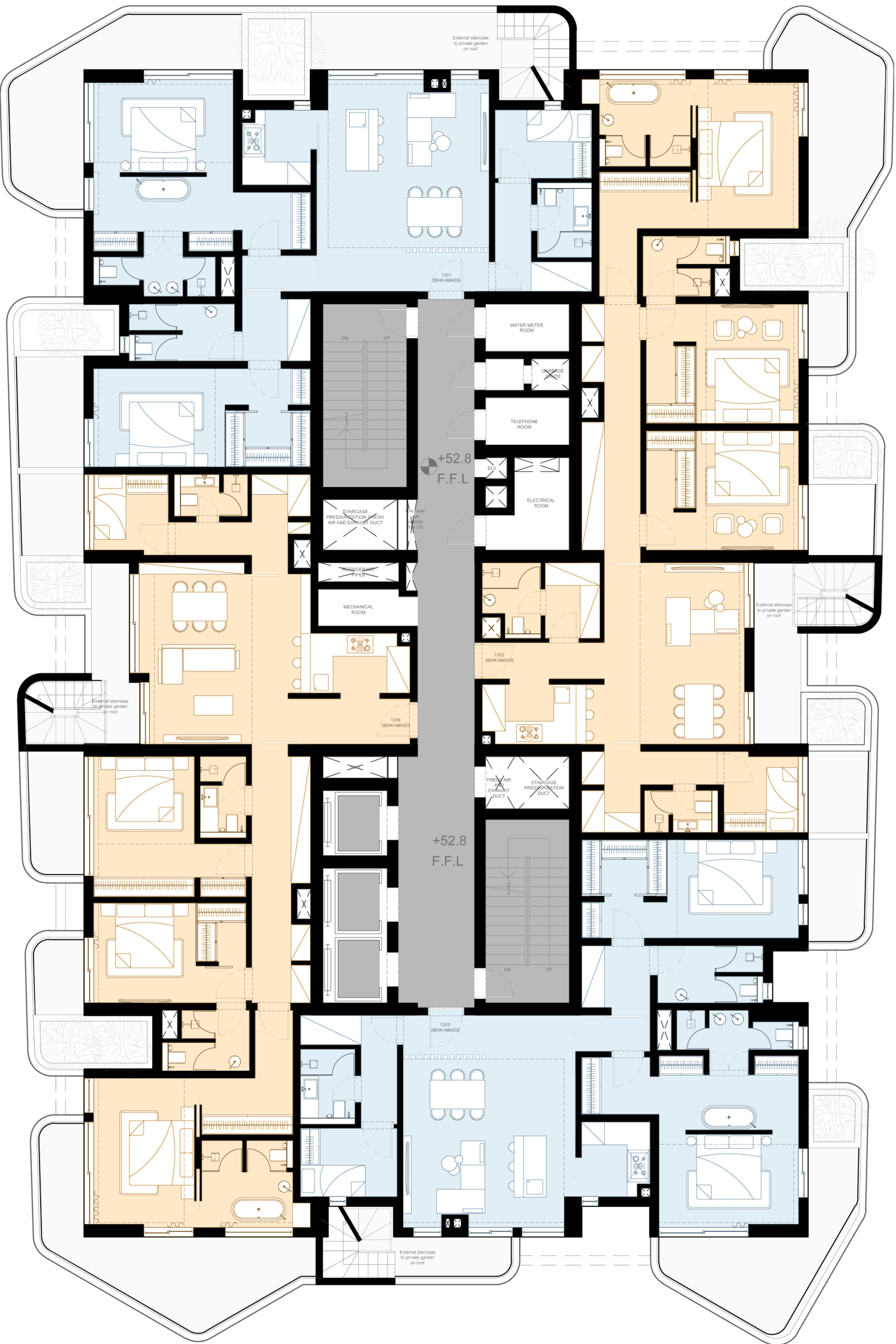
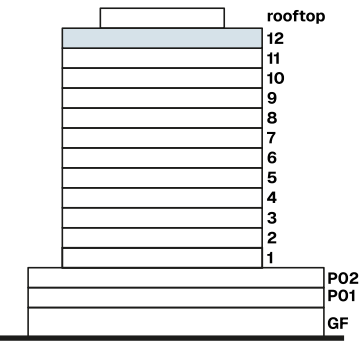


Floor Plan

12F

Floor Details:


 The 12th floor features The Penthouse Collection, which includes: two 2-bedroom and two 3-bedroom residences

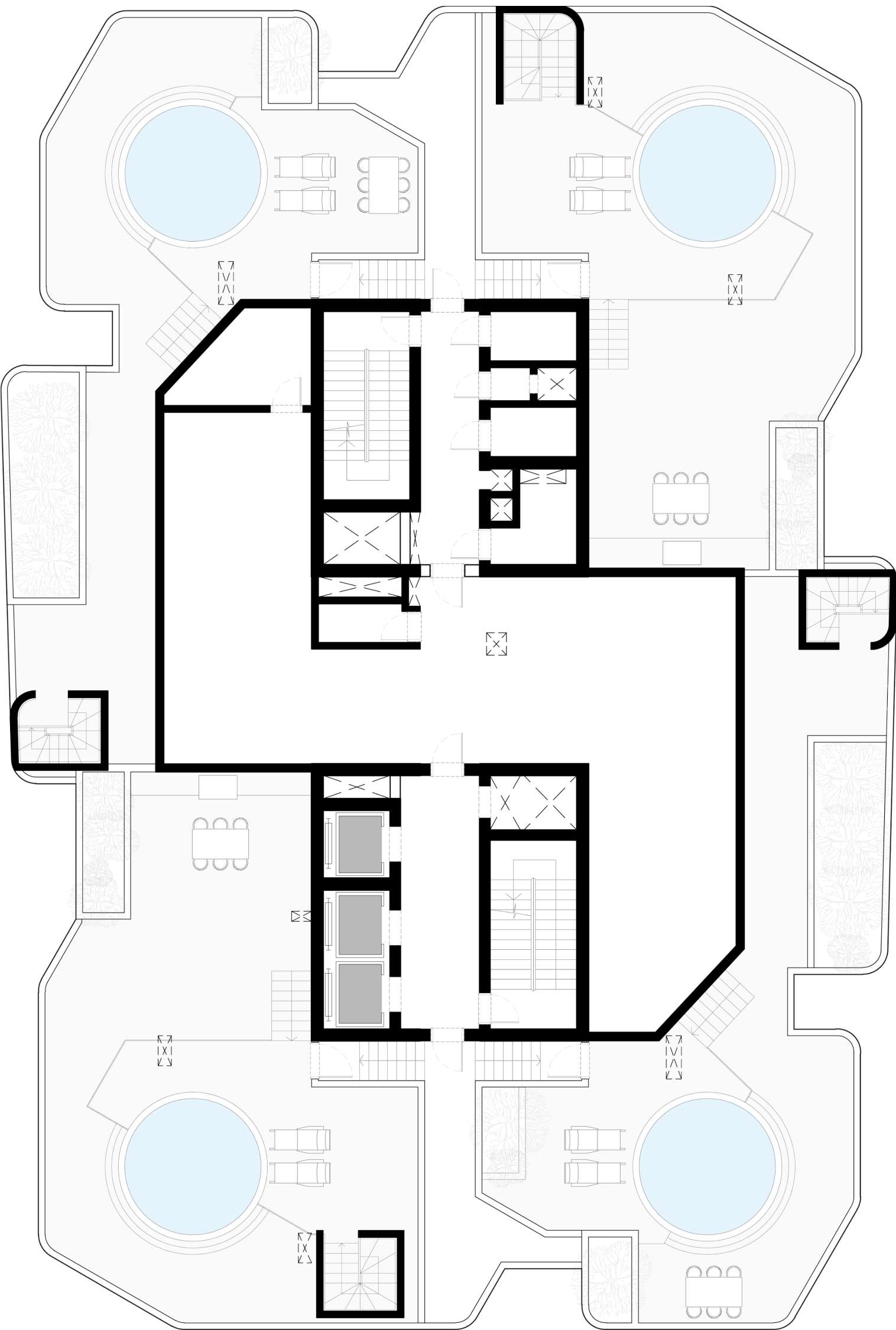
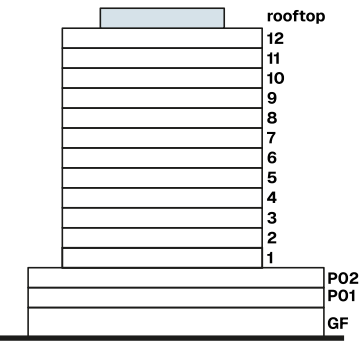


Floor Plan

RF

Floor Details:





 The penthouse collection features four private rooftop terraces, each with its own pool.

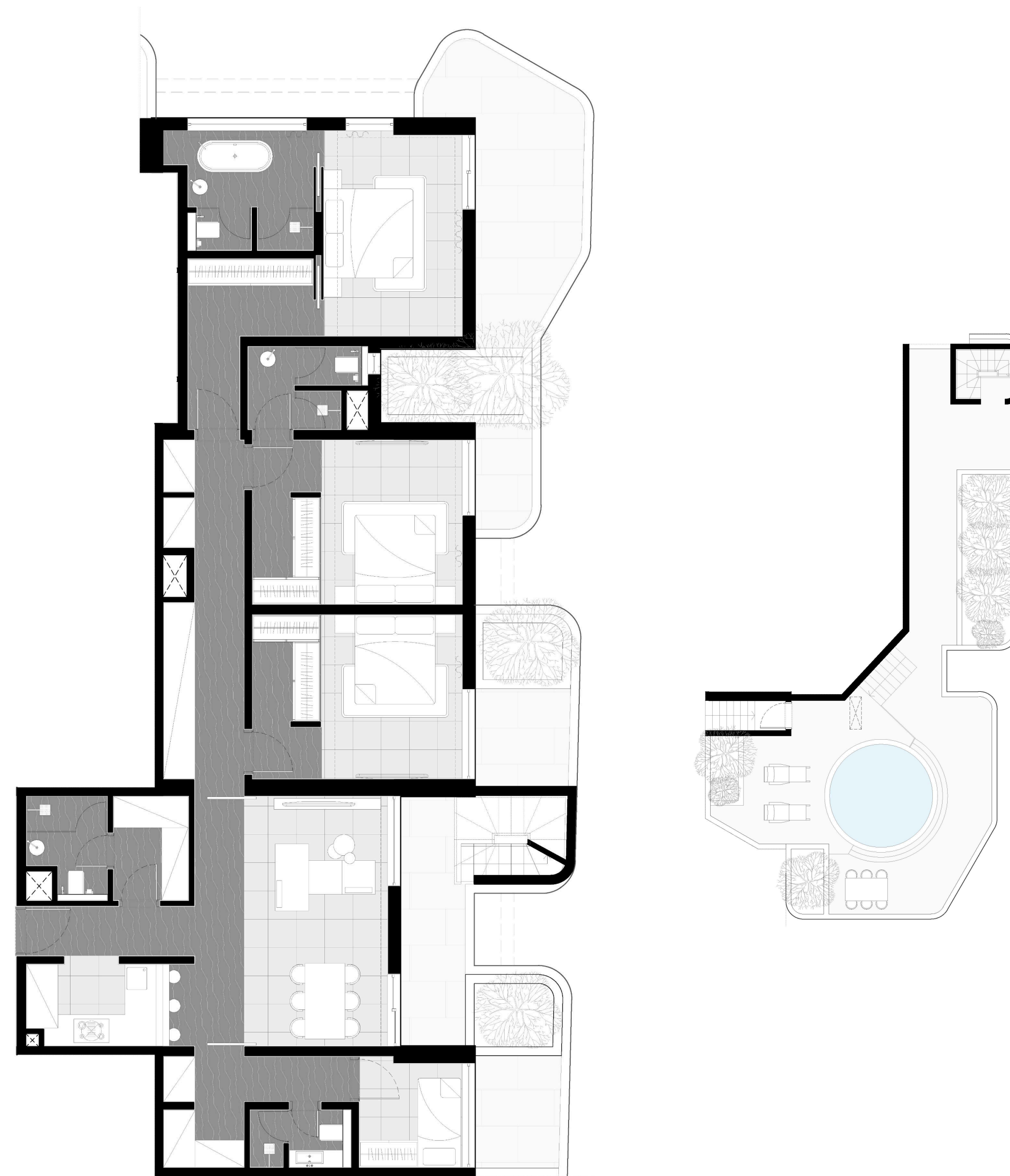
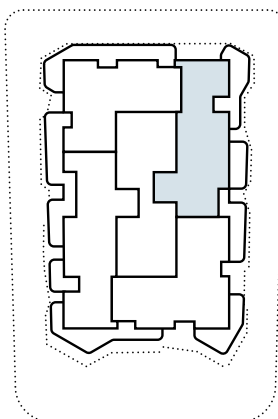


Penthouse

3 Bedroom

Unit Details:





-  3 bedroom + Maid
-  Private Pool on Roof Top
-  Bathtub
-  Walk-in closet

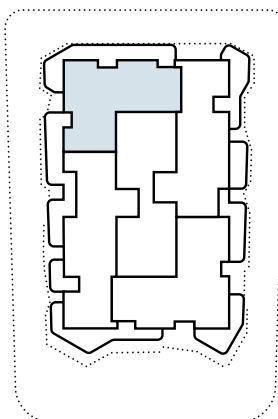


Penthouse

2 Bedroom

Unit Details:

-  2 bedroom + Maid
-  Private Pool on Roof Top
-  Bathtub
-  Walk-in closet



Prices

Includes:

2 years free property management

1 year free maintenance

Access to hotel facilities at the upcoming beachfront hotel developed by Sharafi Development

1-Bedroom Residences

from 2.6M AED

2-Bedroom Residences

from 2.8M AED

2- & 3-Bedroom Penthouse Collection

from 7.8M AED



Payment Plan

40/30/30

5%	Booking (+4% DLD+ 4000AED Admin Fee)
10%	After 1 month
5%	After 6 months
10%	After 12 months
10%	After 18 months
30%	On Handover
30%	Post-handover (2 years 5% every 4 months)

m a r e a

by

SH