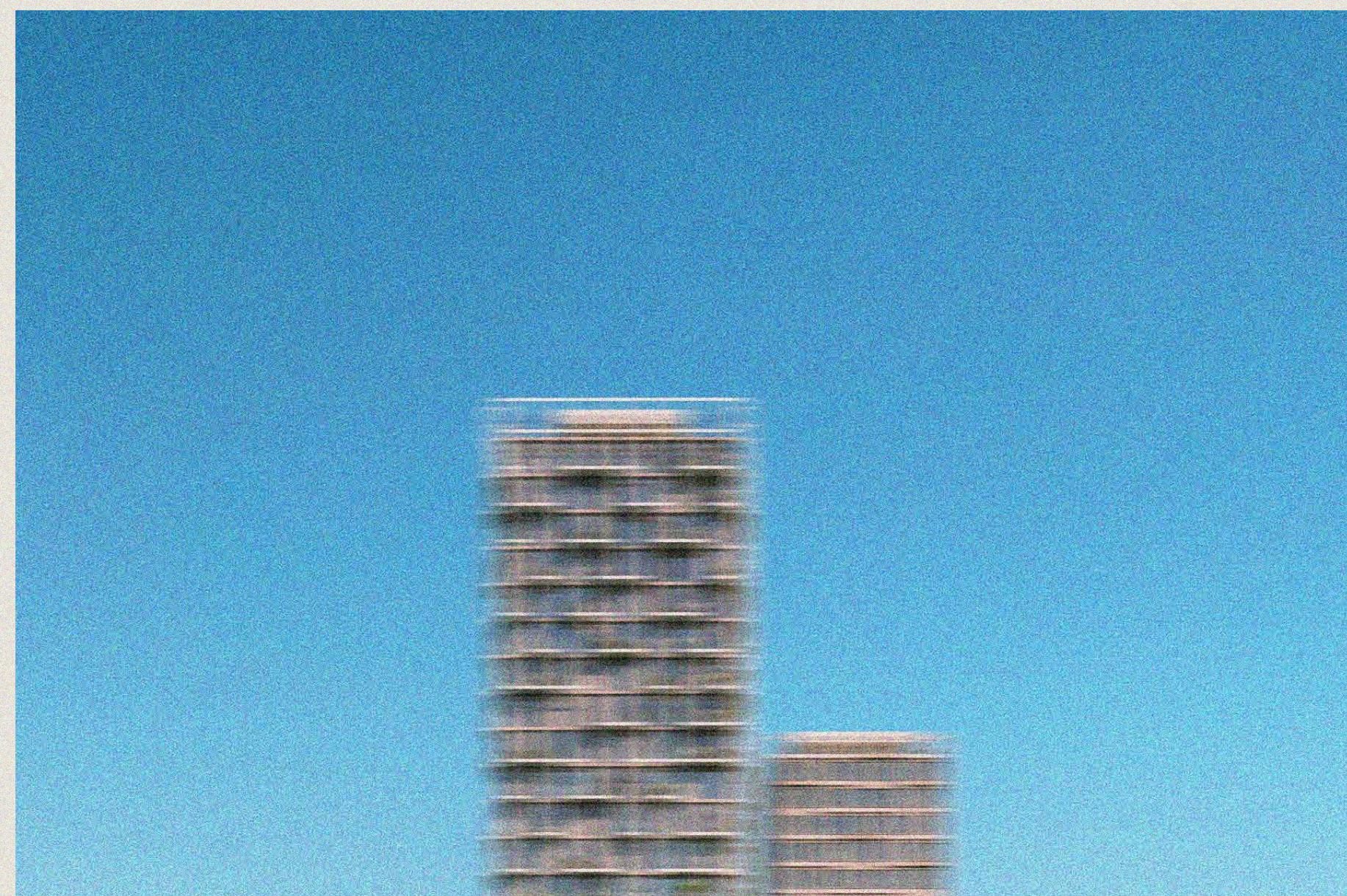


# ENTA

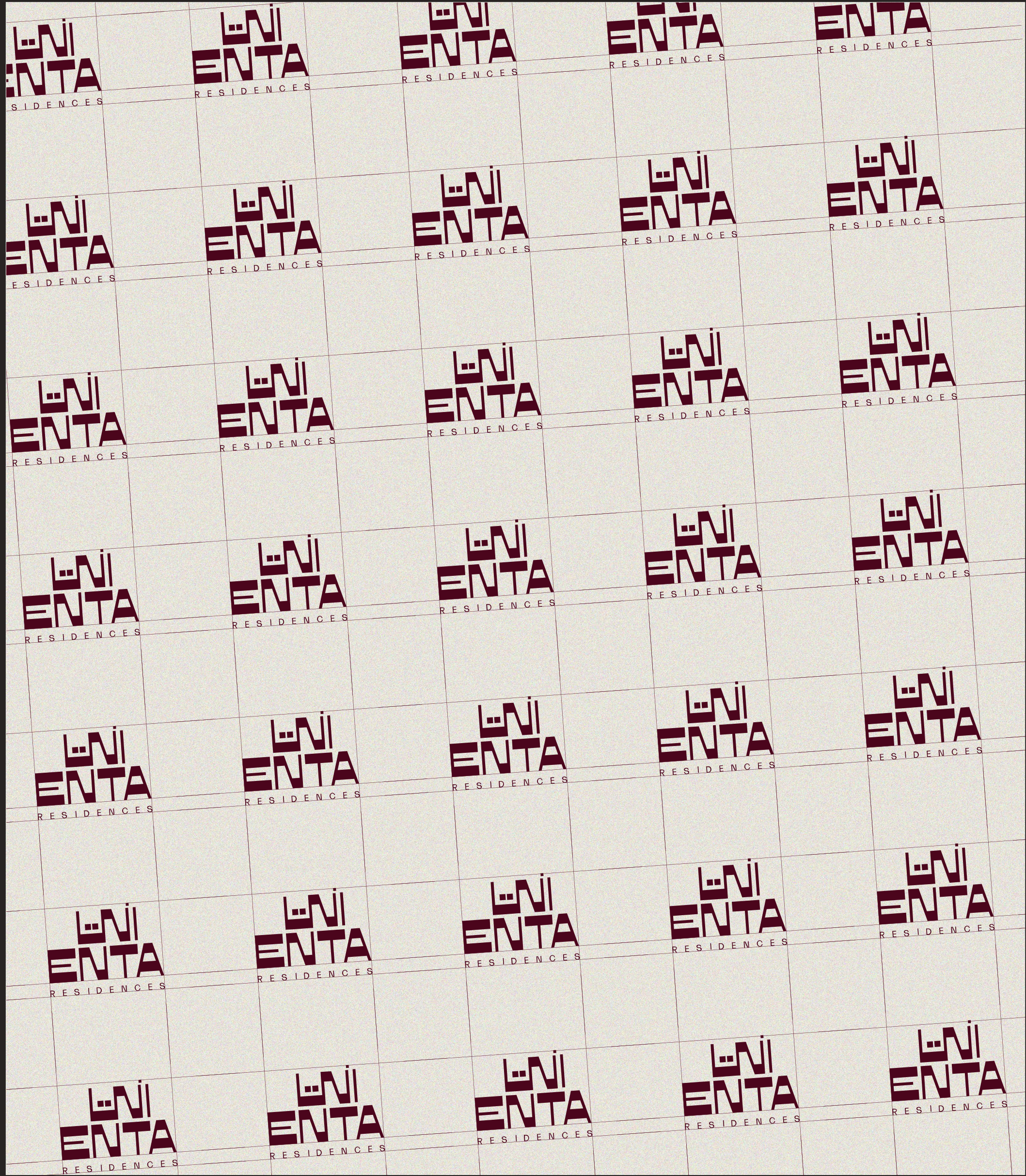
M I N A



EDITION

( 001 )





# ENTA

M I N A

WELCOME

( HOME )



**NOT JUST  
ANOTHER  
REAL-ESTATE  
PRODUCT,  
BUT A  
DIFFERENT  
ONE.**





A place for people who want to settle  
somewhere that really matches their style.  
Raw textures, natural life, rooms to breathe  
and room to be. It's not just how it looks, it's  
how it lets you live.









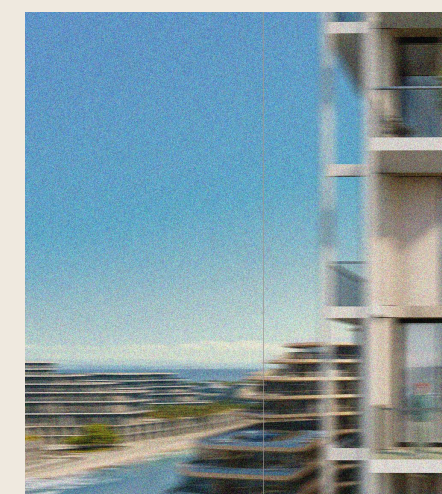








# WHAT YOU GET.



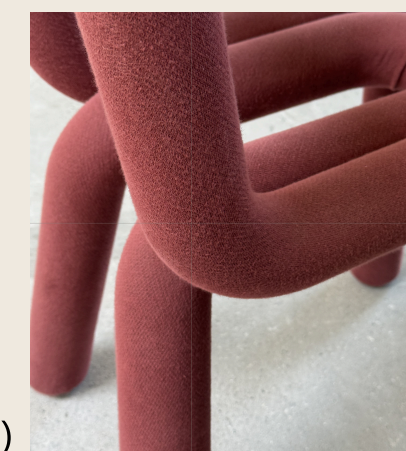
( 002 )



( 003 )



( 004 )



( 005 )

**NOT JUST  
ANOTHER  
BUILD.**

One that stands out. Designed with intention, effortless sophistication and character.

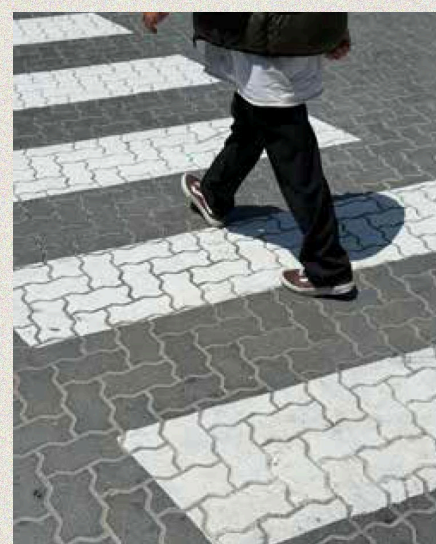
**JUST 119  
UNITS.**

Studios, 1BR and 2BR. Not many. On purpose.

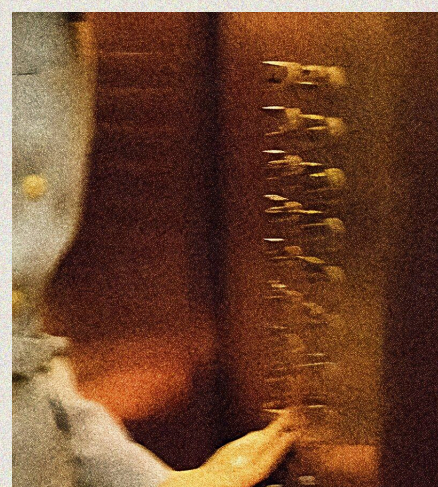








( 007 )



( 008 )



( 009 )



( 010 )

**MOVE IN  
READY.**

Your canvas. Your space.

**PRIVACY  
WHEN YOU  
NEED IT.**

All in one place. Spaces to connect.  
Freedom to reconnect.

**ISLAND  
LIFE.**

On the water. Off the radar. Urban yet  
waterfront.

**WORTH IT.**

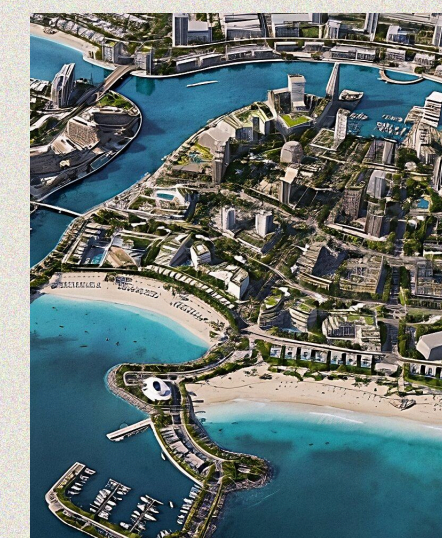
Attractive passive investment. Backed  
by experience.

**ON YOUR  
TERMS.**

Live in it. Lease it or let us manage it.



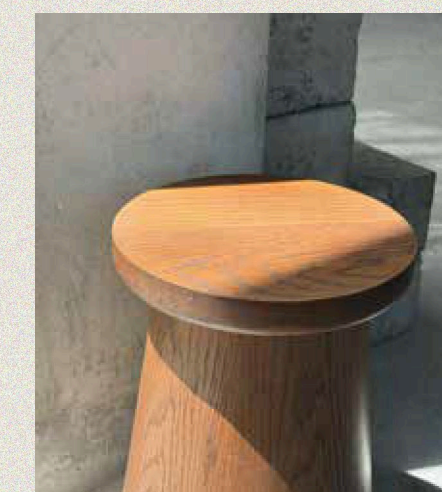
( 011 )



( 012 )



( 013 )



( 014 )



# A CANVAS, DESIGNED TO REFLECT YOUR PERSONALITY AND STYLE



Minimal base. Maximal accents



Curated materials and finishes



Effortless sophistication





ENTA  
ENTA  
ENTA  
ENTA  
ENTA  
ENTA  
ENTA  
ENTA







# GROUND FLOOR AMENITY PLAN

- 01 RESTAURANT
- 02 MAIN LOBBY
- 03 CAFÉ
- 04 CONCEPT STORE
- 05 FLEX WORKSPACE
- 06 FLEX WORKSPACE COURTYARD
- 07 WATERFRONT PROMENADE
- 08 HANGOUT NOOKS
- 09 PUBLIC BBQ AREA







(FLEX WORKSPACE)







(FLEX WORKSPACE)







# FIRST FLOOR AMENITY PLAN

- 01** FITNESS CENTRE
- 02** INFRARED SAUNAS & COLD PLUNGE POOLS
- 03** RESIDENTS' LOUNGE
- 04** LIBRARY
- 05** HOSTING ROOM WITH CHEF'S KITCHEN
- 06** COVERED OUTDOOR LOUNGE
- 07** YOGA DECK
- 08** HAMMOCKS
- 09** OUTDOOR LOUNGE
- 10** BBQ DECK
- 11** LAWN
- 12** SWIMMING POOL AND DECK
- 13** SUNKEN LOUNGE
- 14** OUTDOOR CINEMA
- 15** HIVE







(FITNESS CENTRE)









( LIBRARY )





( HOSTING ROOM )





( OUTDOOR LOUNGE )

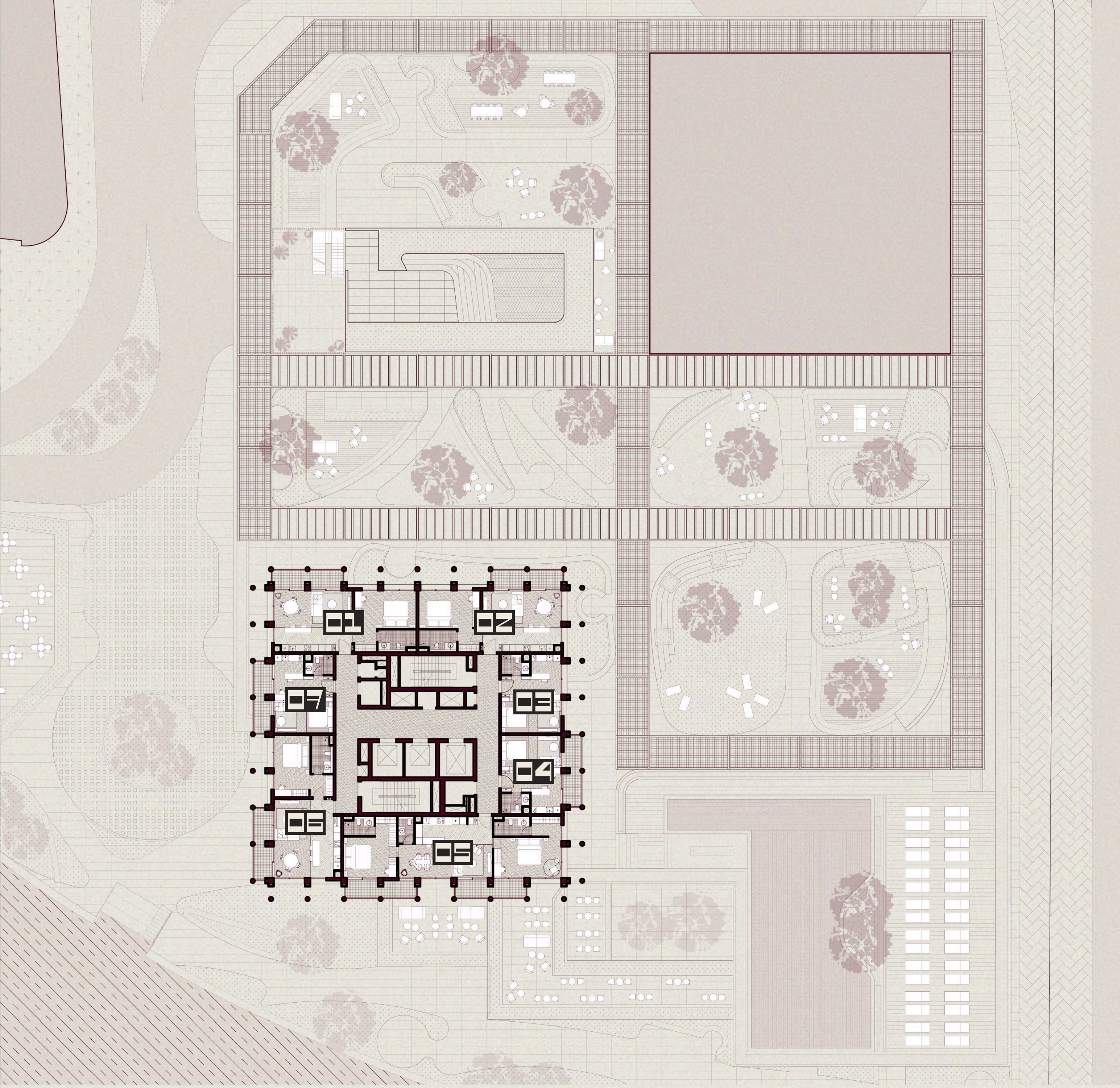






# TYPICAL FLOOR PLAN

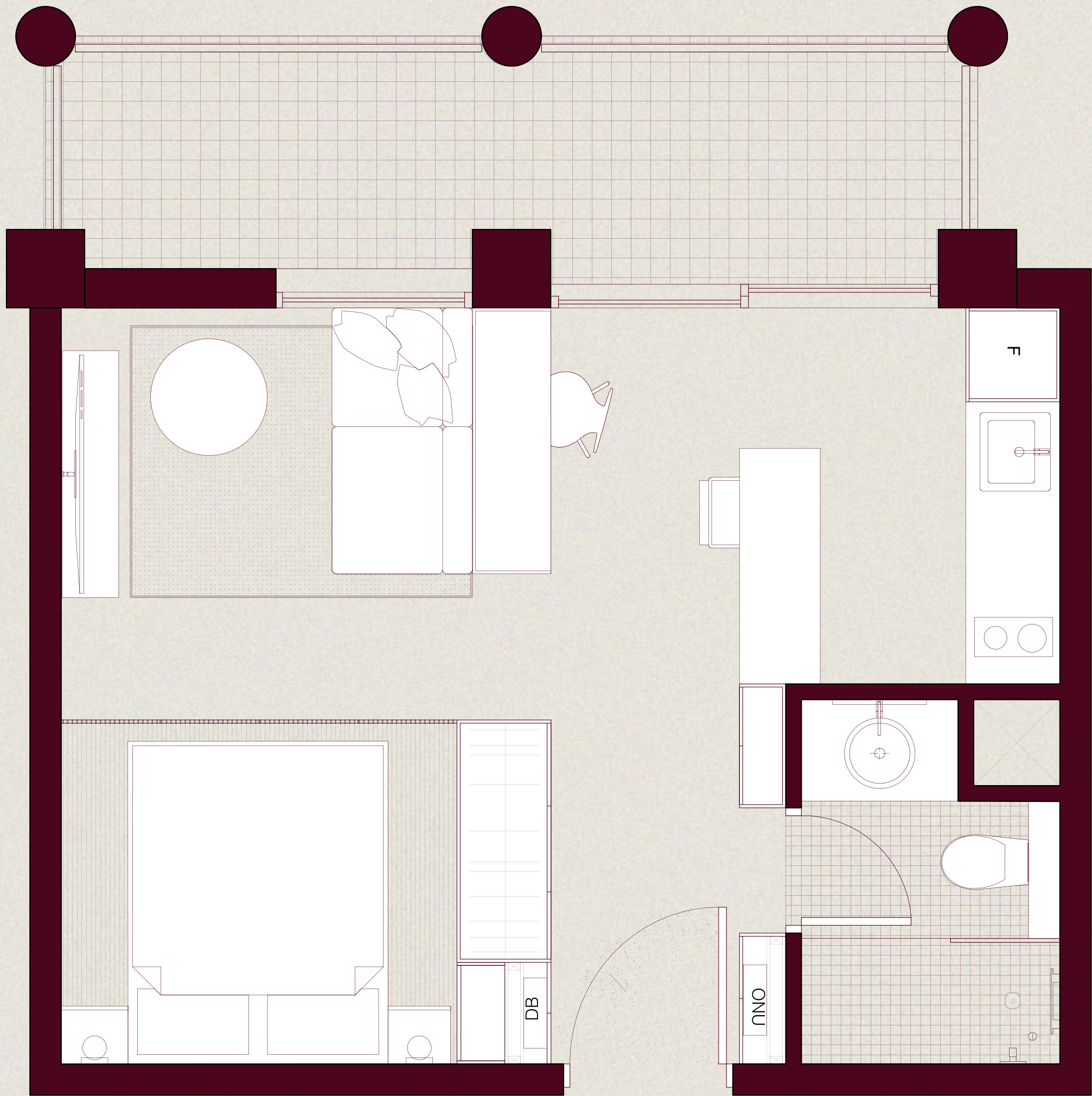
- 01 ONE BEDROOM TYPE A
- 02 ONE BEDROOM TYPE A
- 03 STUDIO
- 04 STUDIO
- 05 TWO BEDROOM
- 06 ONE BEDROOM TYPE B
- 07 STUDIO





# STUDIO

NUMBER OF UNITS	( 51 UNITS )
INTERNAL SIZE	( 348 SQ.FT. )
BALCONY SIZE	( 0-104 SQ.FT. )
TOTAL SIZE	( 348-452 SQ.FT. )











# ONE BEDROOM A

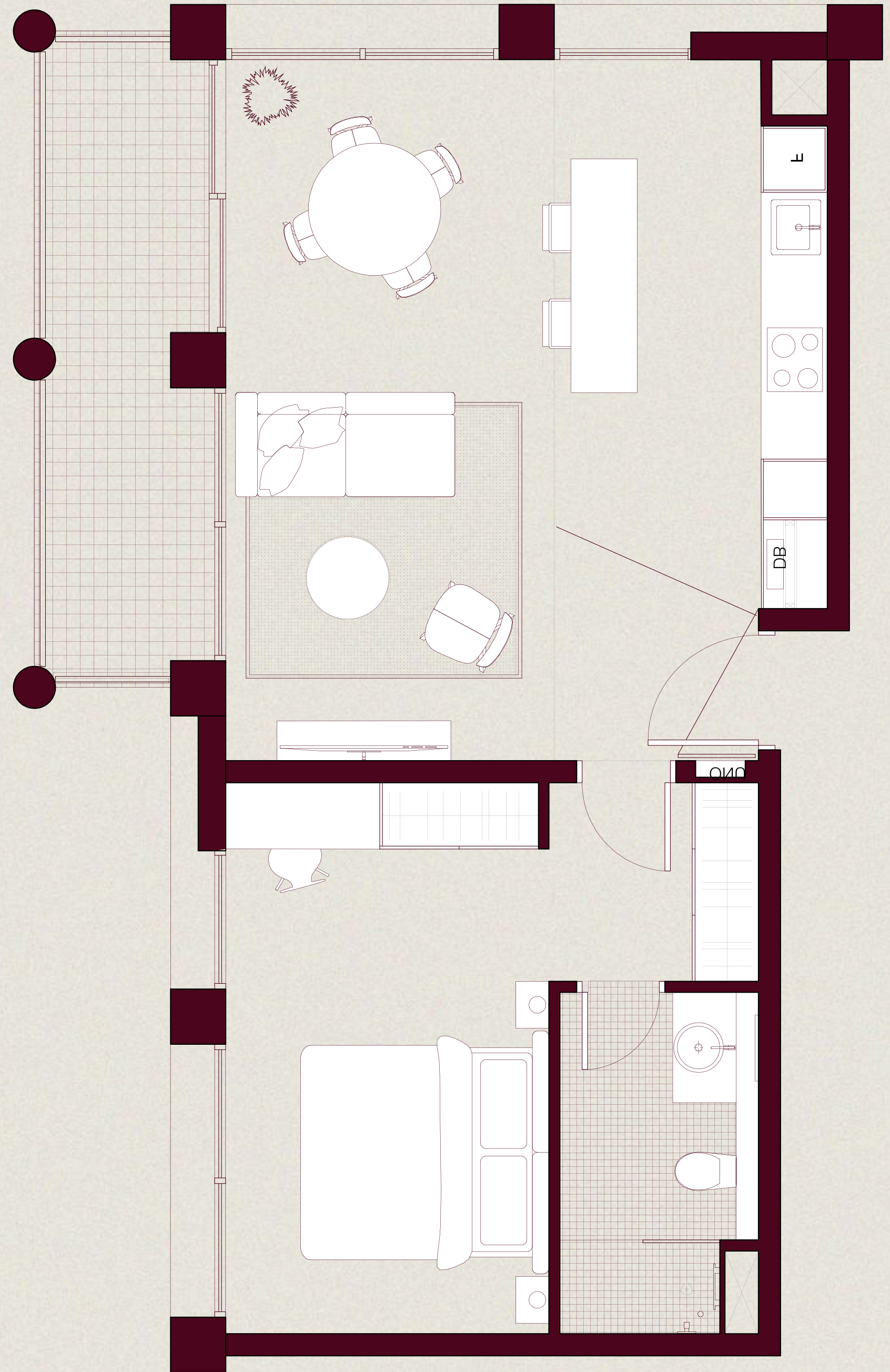
NUMBER OF UNITS	( 34 UNITS )
INTERNAL SIZE	( 647 SQ.FT. )
BALCONY SIZE	( 52-334 SQ.FT. )
TOTAL SIZE	( 699-981 SQ.FT. )





# ONE BEDROOM B

NUMBER OF UNITS	( 17 UNITS )
INTERNAL SIZE	( 662 SQ.FT. )
BALCONY SIZE	( 104-334 SQ.FT. )
TOTAL SIZE	( 766-996 SQ.FT. )



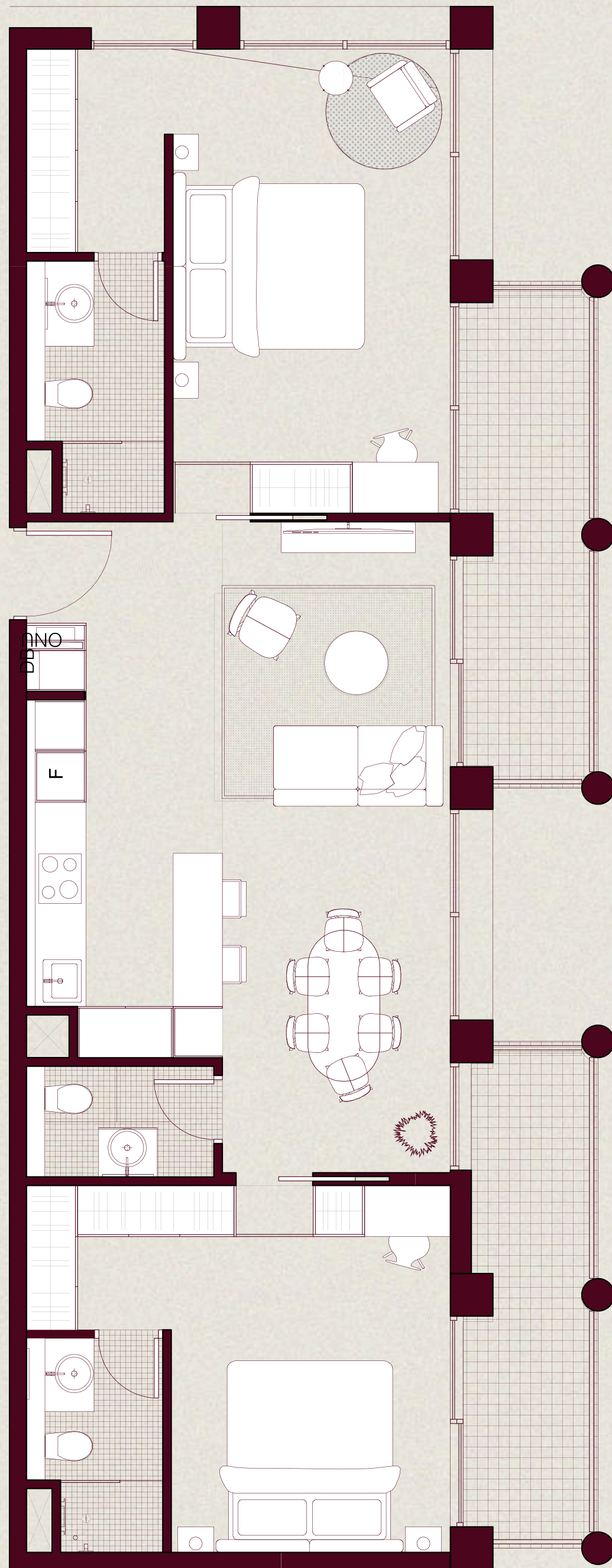












# TWO BEDROOMS

NUMBER OF UNITS

( 17 UNITS )

INTERNAL SIZE

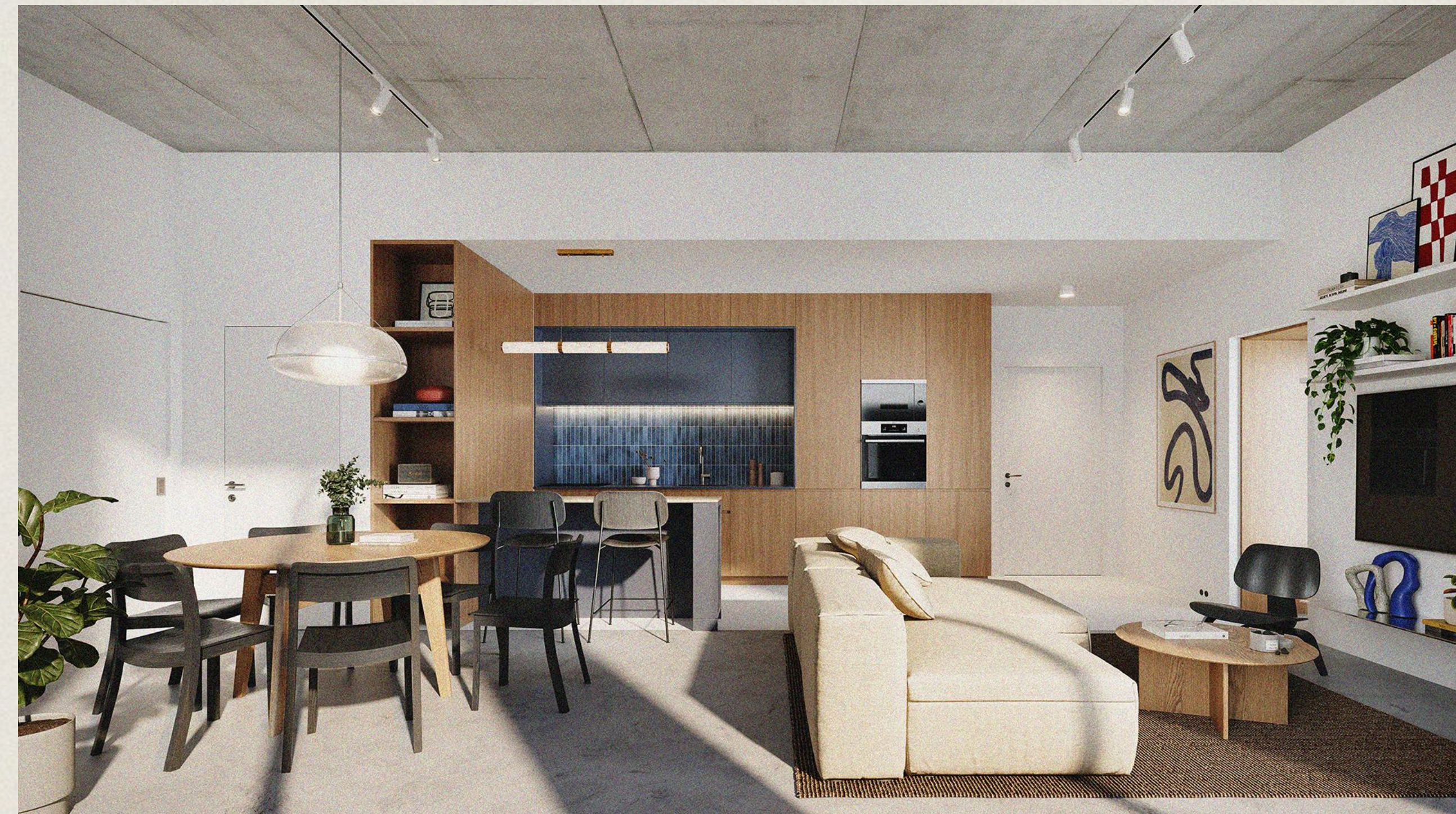
( 980 SQ.FT. )

BALCONY SIZE

( 209-438 SQ.FT. )

TOTAL SIZE

( 1189-1418 SQ.FT. )



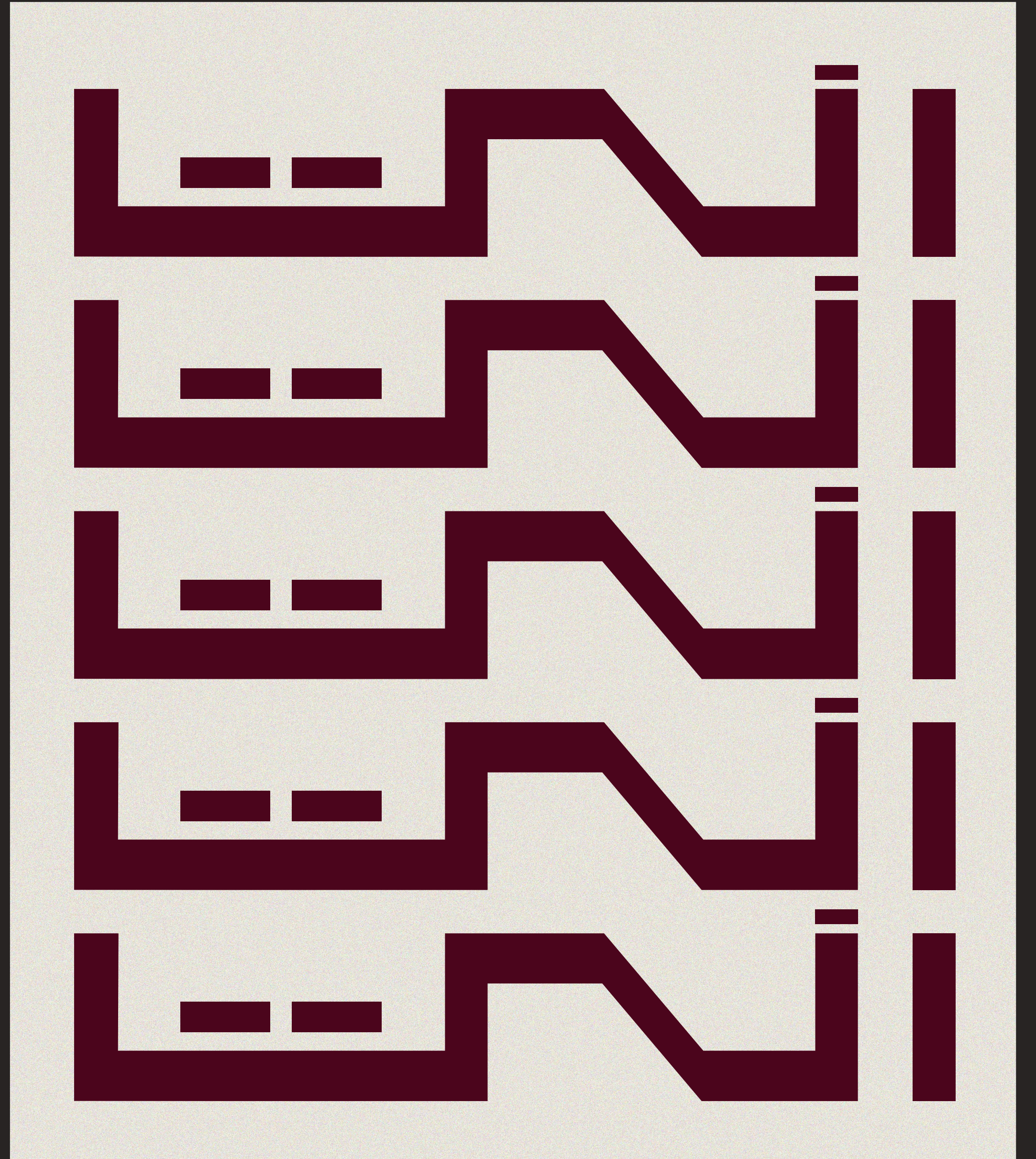
















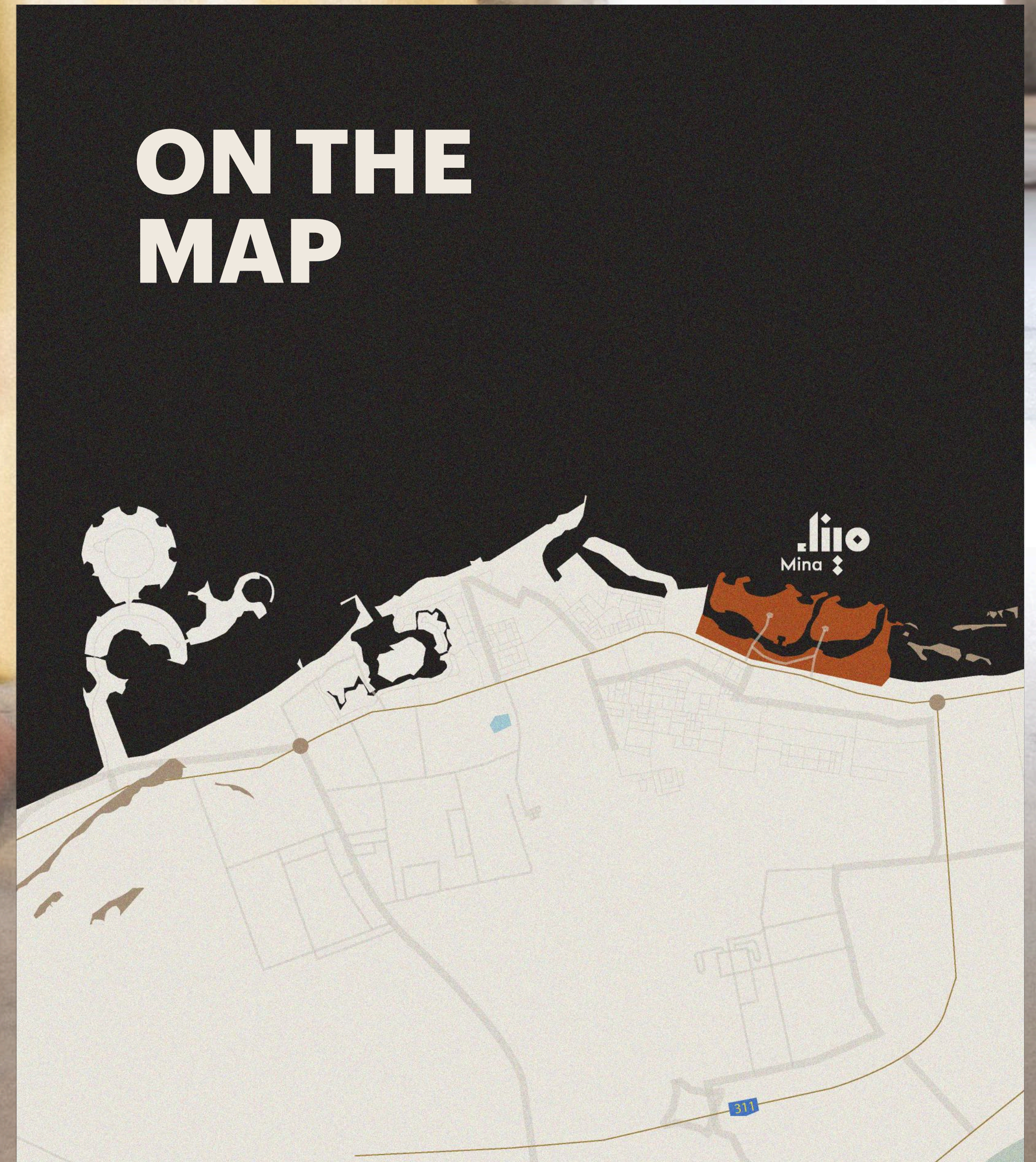


# WHERE IT'S AT

LOCATED ON  
MINA ISLAND,  
RAS AL KHAIMAH  
( 45 MINUTES FROM DUBAI )















( All images used are for illustrative purposes only and may not accurately represent the actual size, features, specifications, fittings, and furnishings. The developer reserves the right to make revisions or alterations as deemed necessary )

# TWO FORCES. ONE VISION.

Brought to you by the team behind HIVE,  
one of the UAE's most talked-about  
creative living concepts—and RAK  
Properties, the force behind over 3,100  
homes and Ras Al Khaimah's most  
thoughtfully built communities.

HIVE

RAK  
PROPERTIES





EXCLUSIVE SALES  
AND MARKETING PARTNER

PHONE	( +971 50 189 4496 )
EMAIL	( SALES@ENTARESIDENCES.COM )
WEBSITE	( WWW.ENTARESIDENCES.COM )
INSTAGRAM	( @ENTARESIDENCES )
LINKEDIN	( ENTA RESIDENCES )

# ENTA